

Capture and Husbandry of Galapagos Finches From The Wild



HARRIET GOOD





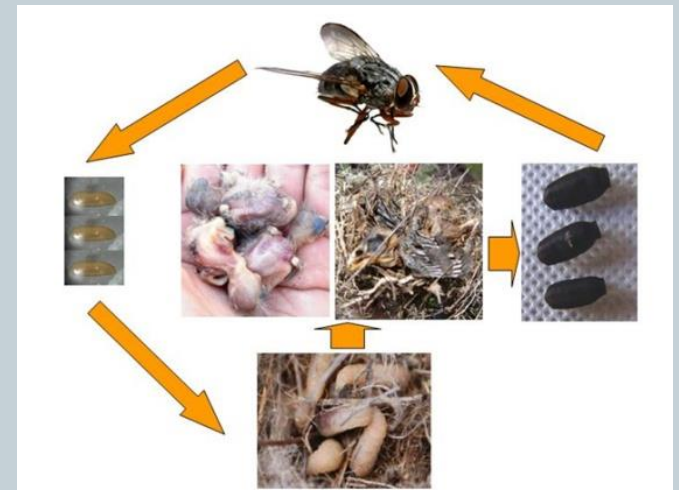
JERSEY



Mangrove Finch Project



- ~100 individuals – Critically Endangered
- Down to 2 sites on Isabela
- Threats include invasive species and disease
 - Black rats
 - Philornis (fly)
- Translocation
 - Tried with adults and wild juveniles
 - Next with hand-reared juveniles



Woodpecker Finches

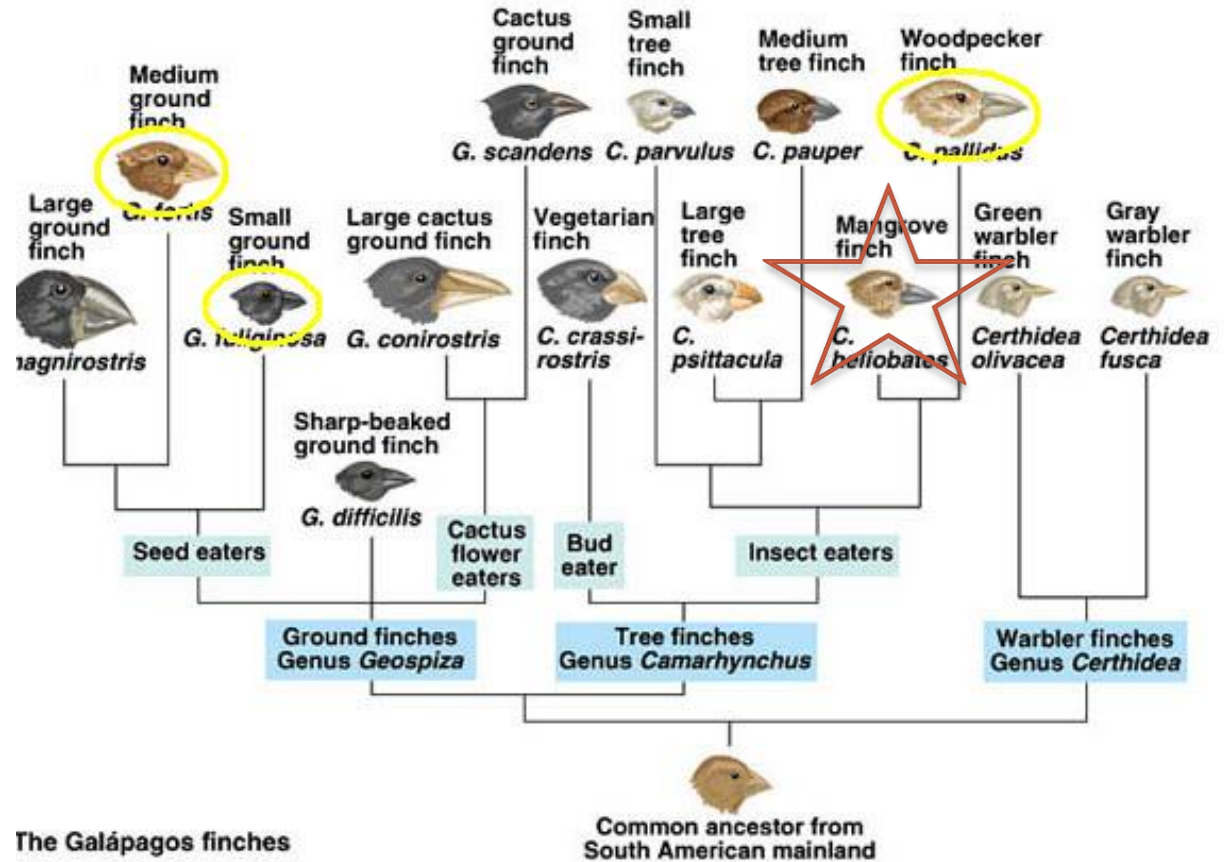
Camarhynchus pallidus

Small Ground Finches

Geospiza fuliginosa

Medium Ground Finches

Geospiza fortis



The Galápagos finches

ght © Pearson Education, Inc., publishing as Benjamin Cummings.

Which Finches We Caught

Catching the birds



- Method

- Mist Net
- From nests



- Time of Day – Early

- Temperature
- More Active
- Time to adjust



Catching the birds



- Processing = As fast as possible
 - Holding site
 - Information collection
- Transportation

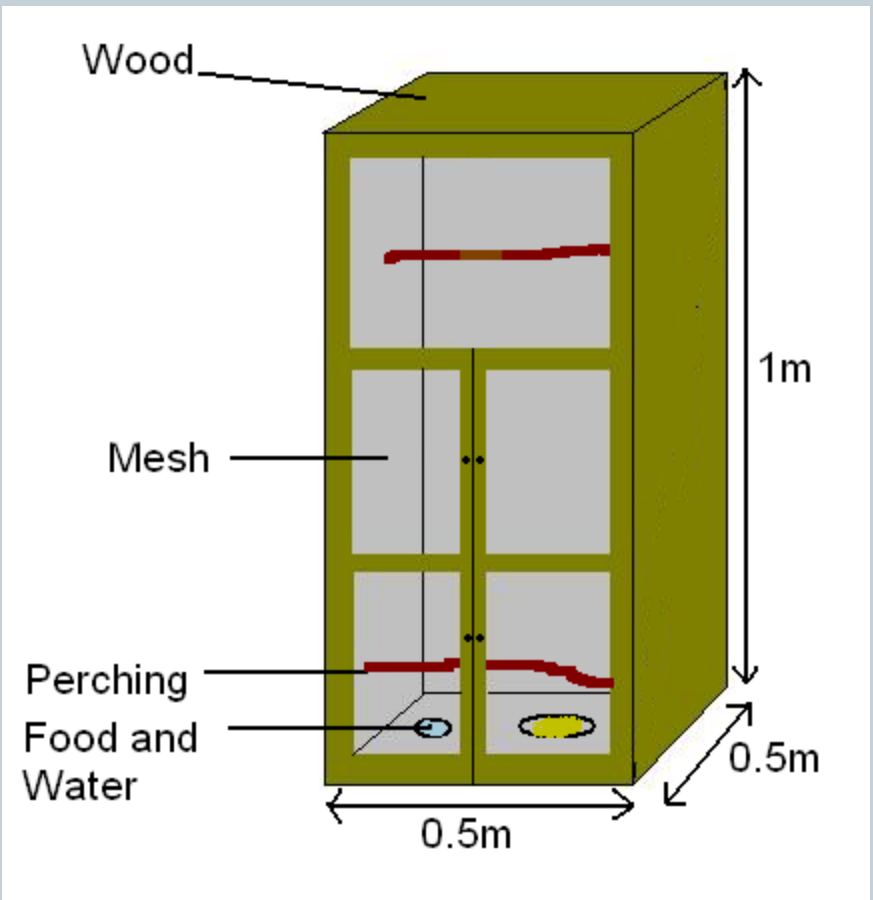


Housing the birds



- Initial holding

- Small cages
- Perching
 - ✦ Sparsely
 - ✦ To Food
- Covered
- Separately
 - ✦ Give know pairs visual access?
- Secluded

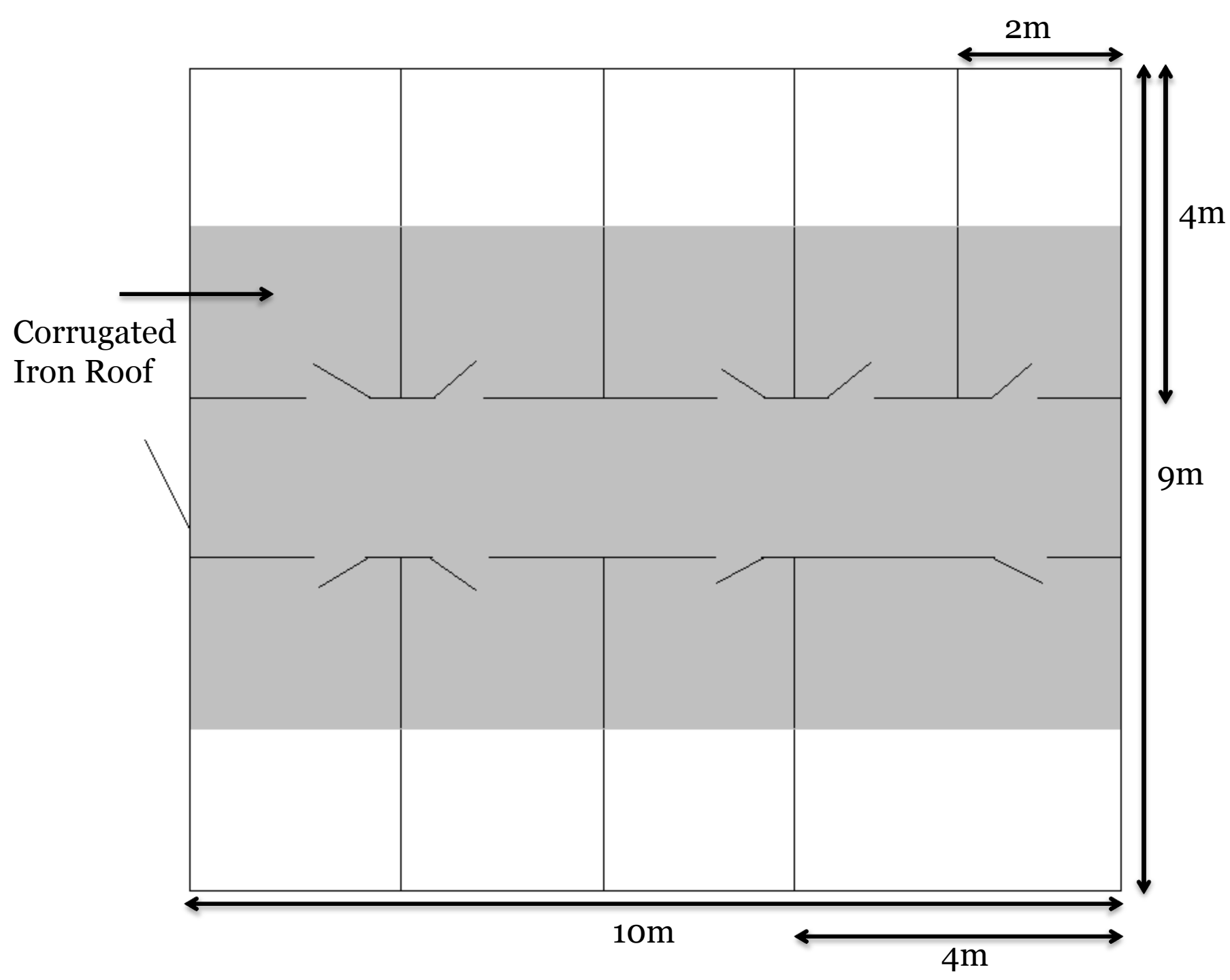


Housing the Birds

- Long Term

- Individually in 4m x 2m x 2.5m (lengthxwidthxheight)
- Pair in 4m x 4m x 2.5m
- Mesh
- Concrete floor
 - ✦ Sand
- Shelter
- Plants
- Catch-cages

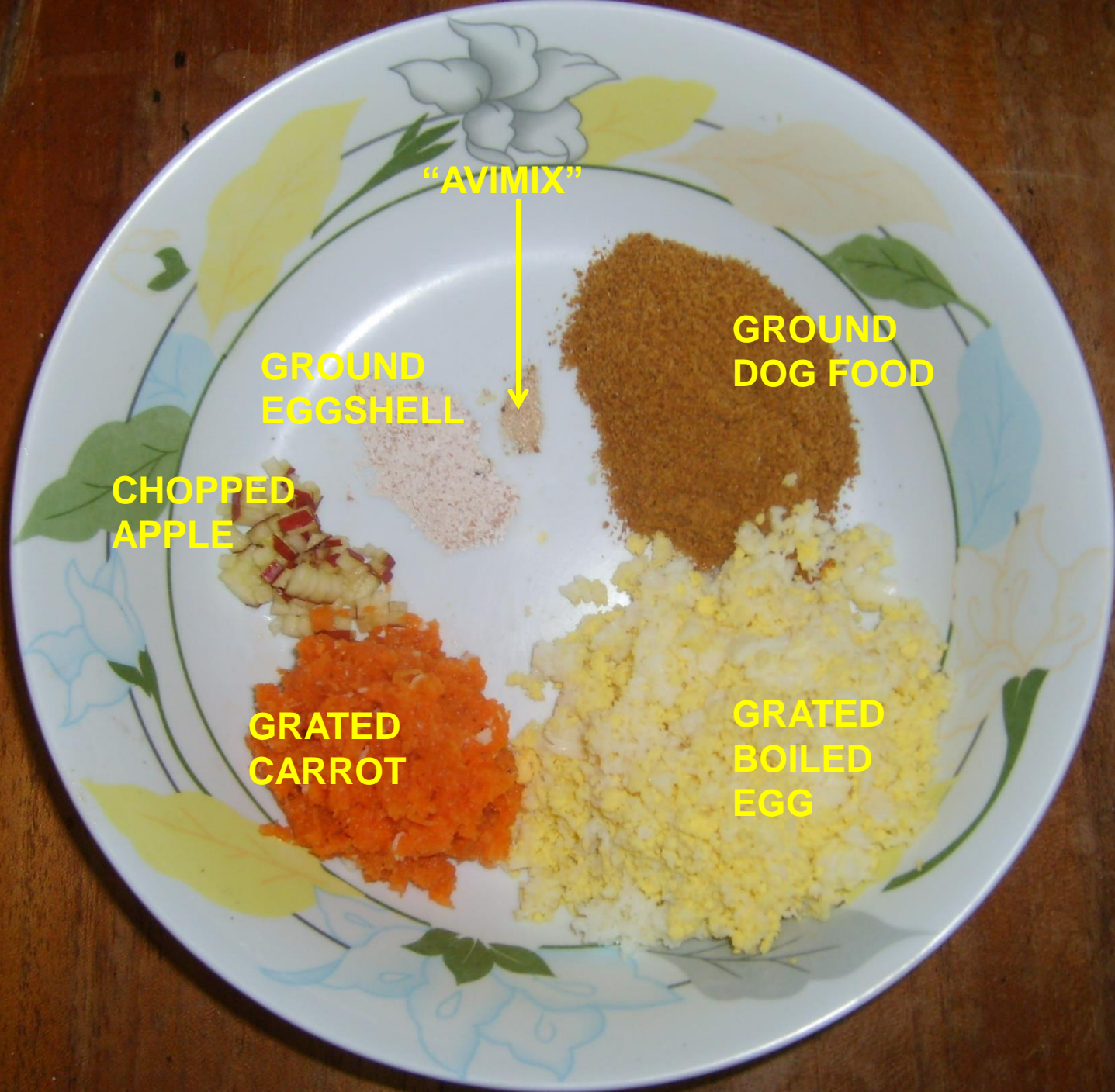




Feeding the birds

- Collect local food items
- Provide new diet as well
- Count items
- Diet presentation
- Add Critical Care Formula to water
- Force-feed





"AVIMIX"

GROUND
EGGSHELL

GROUND
DOG FOOD

CHOPPED
APPLE

GRATED
CARROT

GRATED
BOILED
EGG

Weighing the Birds



- Birds were weighed every few days
- Easily “trained”



Unexpected Problems



- Health of the birds
 - Catching diseases
- Sexual Skew!



Conclusion



- Be very wary of moving birds between locations without proper precautions
- Put a lot of research into diet and behaviour
- Make sure, however you are catching them, that you are getting a mixture of sexes

Thanks To:



- H. Glyn Young, Durrell
- Francesca Cunningham, Durrell & Charles Darwin Foundation
- Sharon Deem, WildCare Institute
- Ellen Dierenfeld, St Louis Zoo (formerly)
- Alizon Llerena, Charles Darwin Foundation
- Birgit Fessl, Durrell & Charles Darwin Foundation
- David Jeggo, Durrell